

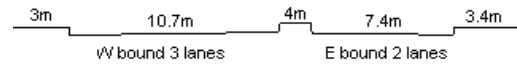
YEAR 2022

CORE STATION 5007

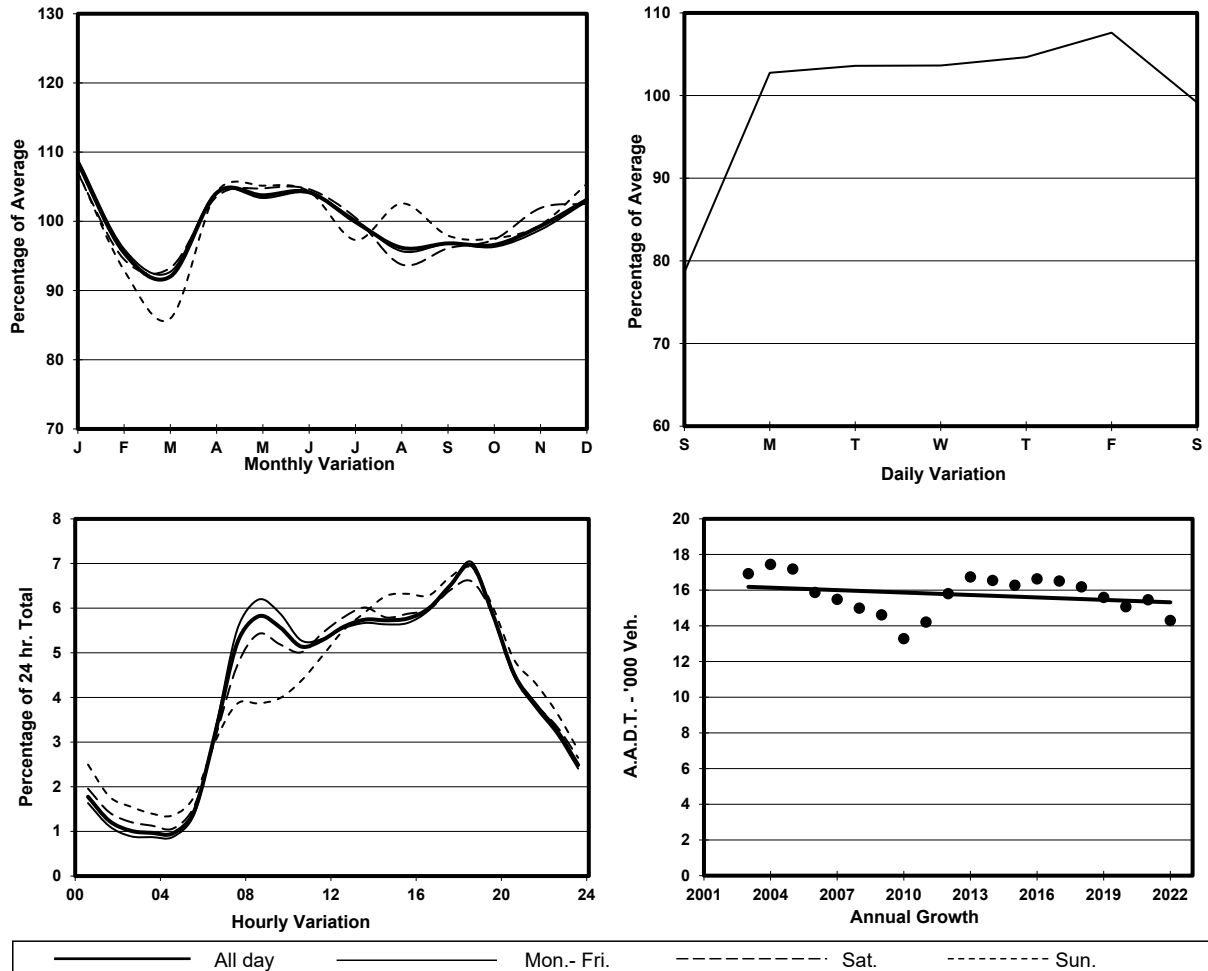
ROAD NETWORK MAJOR

ROAD TYPE DISTRICT DISTRIBUTOR

LINK KWAI FOO RD (from KWAI CHUNG RD to HING FONG RD)



1. TRAFFIC FLOW VARIATION AND GROWTH



2. TRAFFIC CHARACTERISTICS (BY DIRECTION)

Parameter	All - Day	Mon. - Fri.	Sat.	Sun.
EAST BOUND				
A.A.D.T.	3510	3740	3470	2670
R 12 / 24 - %	72.7	73.5	72.4	68.1
R 16 / 24 - %	90.7	91.4	90	88
AM Peak Hour	0900-1000	0900-1000	0900-1000	0900-1000
One-way flow at AM peak hour	200	220	200	130
T - % (AM)	-	-	-	-
PM Peak Hour	1800-1900	1800-1900	1800-1900	1700-1800
One-way flow at PM peak hour	260	290	230	170
T - % (PM)	-	-	-	-
Prop.of commercial vehicles - 16 hr.	-	-	-	-
WEST BOUND				
A.A.D.T.	10790	11360	10890	8750
R 12 / 24 - %	68.2	69.1	67	64
R 16 / 24 - %	85.6	86.2	84.6	82.5
AM Peak Hour	0800-0900	0800-0900	0800-0900	0700-0800
One-way flow at AM peak hour	650	730	600	330
T - % (AM)	-	-	-	-
PM Peak Hour	1800-1900	1800-1900	1800-1900	1800-1900
One-way flow at PM peak hour	730	770	720	620
T - % (PM)	-	-	-	-
Prop.of commercial vehicles - 16 hr.	-	-	-	-

3. OTHER INFORMATION AND COMMENT